

3 STOREY SEMI-DETACHED COURTYARD VILLAS 三层豪华半独立式庭苑





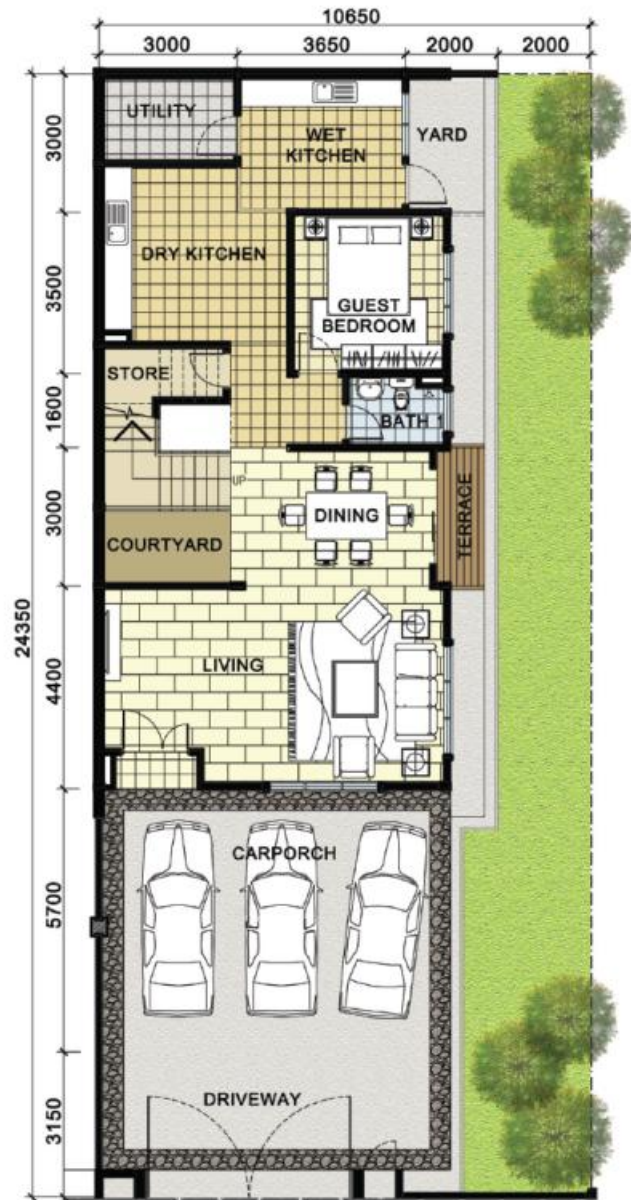


SITE PLAN

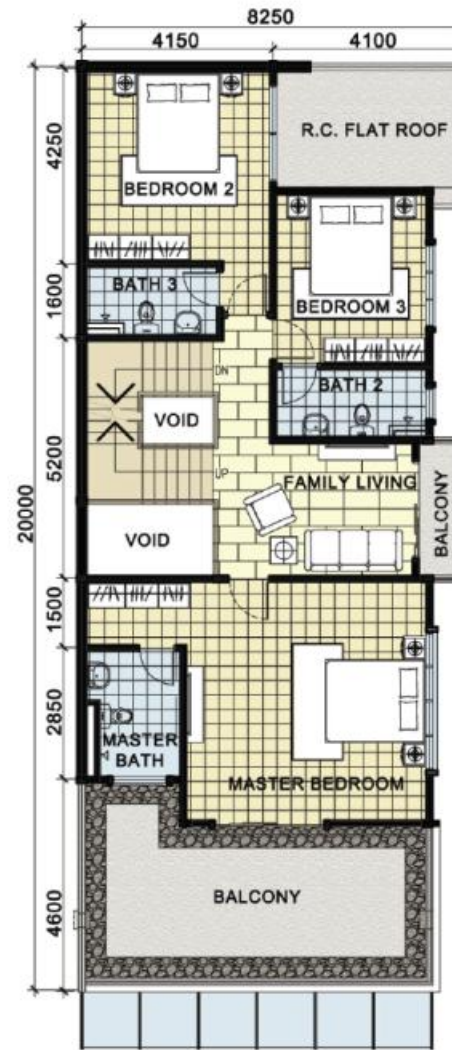


# FLOOR PLAN

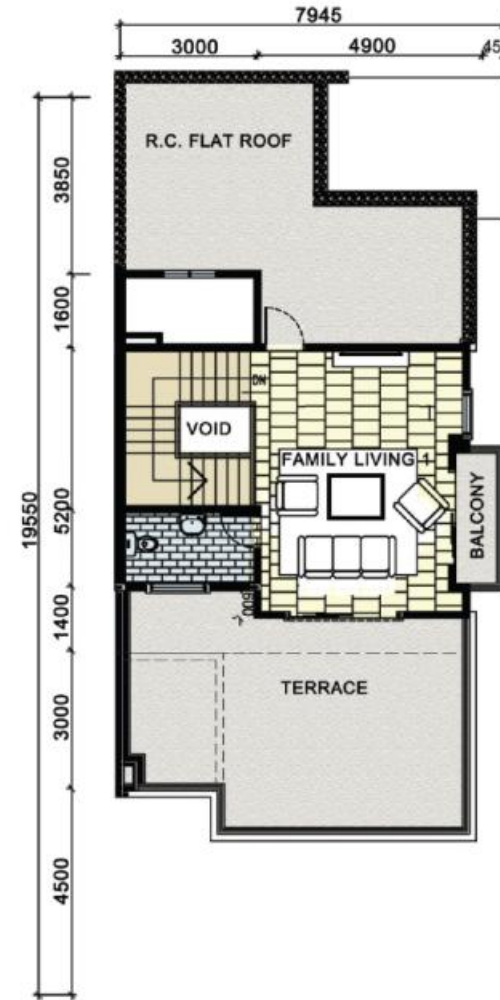
Ground Floor



First Floor



Second Floor



# SPECIFICATIONS

## 35' x 80'

### Land Size

2800 sq ft - 5599 sq ft/

### Gross Built-Up Area

4760 sq ft

5 + 1 Bedrooms /  
5 Bathrooms

#### STRUCTURE

##### WALL

Reinforced Concrete Framework  
Clay Brickwall with Cement Plaster

##### ROOF

Metal Deck Roof

##### CEILING

Skim Coat with Cornice

##### DOORS

###### Main Entrance

Solid Timber Decorative Door

###### Bedrooms/Baths

Timber Flush Door

###### Back Door (Wet Kitchen)

Solid Timber Door

###### Others

Powder Coated Aluminium

Sliding Glass Doors/

Timber Louvred Door/

Timber Flush Door

#### FLOOR FINISHES

###### Living & Dining

Good Quality Ceramic Tiles

###### Dry & Wet Kitchen

Ceramic Tiles

###### Guest Room

Ceramic Tiles

###### Utility

Ceramic Tiles

###### Stair

Ceramic Tiles

###### Family Living

Good Quality Ceramic Tile

###### Bedrooms Upstairs

Laminated Timber Strips/ Ceramic Tiles

###### Master Bath

Ceramic Tiles

###### All Other Baths

Ceramic Tiles

###### Store

Cement Render

###### Terrace & Balcony

Cement Render with Loose Pebbles

###### Car Porch & Driveway

Cement Render with Loose Pebbles

###### Yard & Others

Cement Render

#### WALL FINISHES

###### Wet Kitchen

Full Height Ceramic Tiles

###### Dry Kitchen

1500mm High Ceramic Tiles

###### Master Bath

Full Height Ceramic Tiles

###### All Other Baths

1500mm High Ceramic Tiles

###### Others

Plaster & Paint

#### LOCKS

Good Quality

##### Locksets

#### FENCING

1500mm High

##### Fencing

#### GARDEN

Turfing

#### PAINT

Emulsion Paint

##### Internally &

Weather Resistance

##### Externally

#### SANITARY WARES

WC 5

Washing Basin 5

Shower 5

Kitchen Sink 2

#### TELEPHONE & ELECTRICAL INSTALLATION

Lighting Point 36

13A Power Point 25

Air Cond Point 2

Fan Point 7

Telephone Point 2

Astro Point 1

Door Bell Point 1

Auto Gate Point 1

Water Booster Pump System 1